



**New
product**

Long and stable meander detection function is attained
User's task is reduced with smooth and easy detection setting

Line Follower Head

LH19

Line Follower Head LH19 is a sensor which optically detects meander of register lines or patterns printed on or edges of webs, This meander sensor can be used safely for a long time since it uses SPD as the sensing element and white LED as the light source.

Features

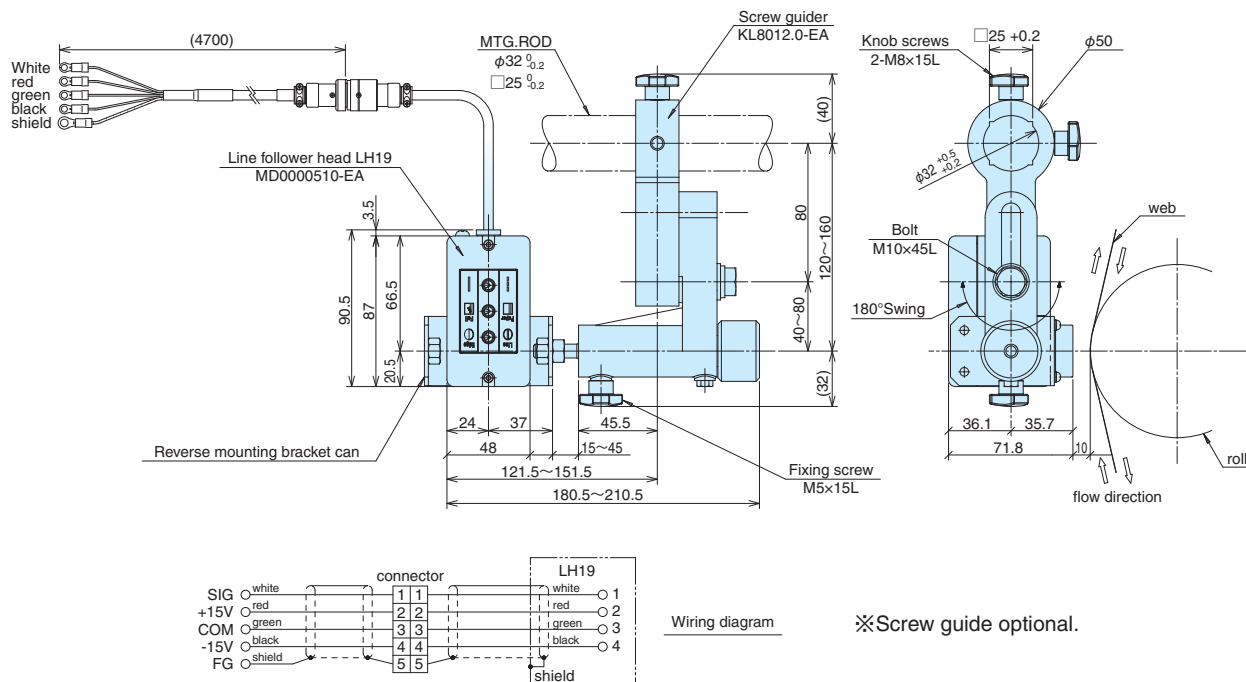
Stronger in sensing of pale blue and green than conventional sensors

With SPD, response speed is increased and sensing accuracy during high-speed operation is improved

Spot diameter can be adjusted easily with the slide control without changing the sensing distance

White LED is used as the light source, which secures long and stable operation and reduces the spare parts cost

External dimensions



Specifications

Spotlight distance	10mm
Detection field of view	5 to 3mm (Spot diameter)
Register line width	1.0mm or more
Light source	White LED
Light source wavelength	Visible Light
Output voltage	0 to 5V DC
Detection element	SPD
Power supply	±15V DC
Ambient temperature	0 to +50°C
Main body material	Cast Aluminum Alloy
Mass	Head: 400g Attached cable: 250g

We reserve the right to change the specifications in this catalog without prior notice to improve and update our products.



NIRECO CORPORATION

●Hachioji Office

2951-4, Ishikawa-machi, Hachioji, Tokyo, 192-8552, Japan
Telephone : +81-42-660-7409 Facsimile : +81-42-644-6658

●Kyobashi Office

Asako Kyobashi Bldg, 2F 1-6-13 Kyobashi, Chuo-ku, Tokyo, 104-0031, Japan
Telephone : +81-3-3562-2201 Facsimile : +81-3-3564-4316

Website : www.nireco.com E-mail: info-epc@nireco.co.jp