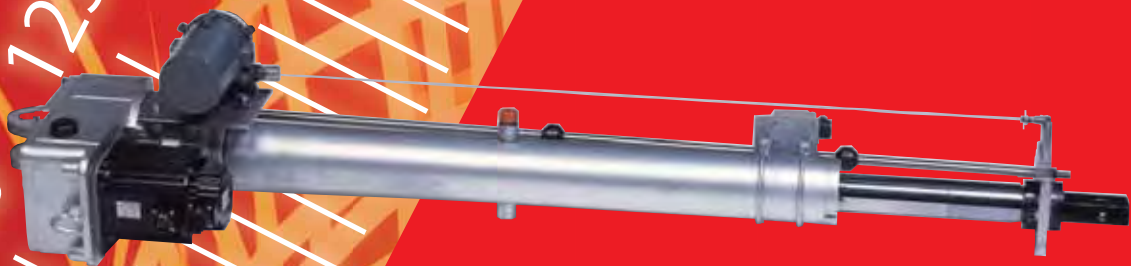


NIRECO

For Heavy Industry

AC Servo Actuator

Model **A 2000**



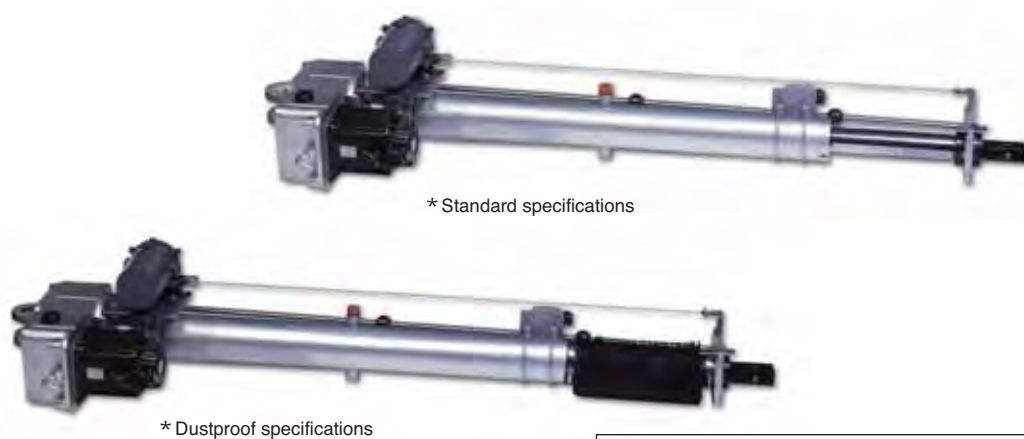
**Strong,
Smooth and
Extremely Durable**

Power and Durability

The AC Servo Actuator A2000 connects to a servo driver and strip guide amplifier, and is used primarily as an actuator (motor) for CPC devices.

It provides powerful, stable operation, and generates little noise due to the highly-efficient ball screw developed for gear reduction units and cylinders.

The A2000 has a fully-enclosed structure consisting of a highly-efficient ball screw and AC servo motor. The ball screw rotates in conjunction with the forward/reverse rotation of the AC servo motor, and generates an external reciprocating motion as the ball screw nut moves in the direction of thrust.



* These are the specifications for the AC servo actuator itself.
Please inquire at your nearest Nireco dealer regarding the dustproof specifications when using a position transmitter.

● Features ● ● ●

High thrust

The A2000 can be operated at a maximum thrust of 20 kN.

Easy-to-select standard stroke

The AC Servo Actuator A2000 has a standard stroke of 320-970 mm, with a 50 mm pitch, and provides 14 types of strokes. Of course, the A2000 can be order made, with a pitch as small as 1 mm.

Reliable operation

The A2000 operates quietly and reliably with a powerful thrust as a result of its highly-efficient ball screw and quiet gear reduction unit.

Long lifespan

The durability of the ball screw, which is subjected to severe wear and tear, has been improved with the use of a stronger material than conventional products (as assessed internally).

● Specifications ● ● ●

The specifications of the actuator (of the main body of A2000)			
Model	A2000 (See the model chart)	Protective structure	Indoor type (corresponding to IP50)
Mechanical stroke	Minimum of 320 mm to maximum of 970 mm (Operating stroke* : min. 300 mm - max. 950 mm) * The stroke between the limit switches	Motor specifications	Output
			Voltage
Nominal speed	Approximately 34 mm/s (with the motor rotating at 1,500 min ⁻¹)	Lubrication	Grease bath (recommended grease : Daphne Eponex SR No. 0) The amount of grease differs according to the specifications. Refer to the instruction manual for details.
Thrust	20kN		
Piston rod rotational torque	Approximately 50 N · m	Mass	Differs according to the specifications. Refer to the drawings with external dimensions.
Ambient temperature	0 to 40 (standard) *	Accessories	Refer to the model chart (7).
Relative humidity	80% or less	Coating color (standard color)	Silver

Note: If you intend to use the A2000 in an environment exceeding 40 , contact your nearest Nireco dealer.

● Model Chart ● ● ●

	1	2	3	4	5	6	7	8
A2000	Mechanical stroke	Operating speed	Dust proof cover	Position transmitter	Stopping position switch	Installation orientation	Accessories /	Y

1	Mechanical stroke	Min 320 - max 970 mm ; 50 mm pitch	
2	Operating speed	The maximum speed for standard specifications is 34 mm/s	
3	Dust proof cover specifications	N	None
		1	Included (standard specifications : max. 60)
		2	Included (heat-resistant specifications : max. 80)
4	Position transmitter specifications Note1 : FW22.XX =Nireco analog position transmitter Note2 : Linear probe = Nireco absolute magnetostriction linear displacement sensor	N	None
		F02	FW22.02
		F03	FW22.03
		F12	FW22.12
		F13	FW22.13
		F22	FW22.22
		F23	FW22.23
		F32	FW22.32
		F33	FW22.33
	L	Linear probe	
	Y	Other	
5	Stopping position switch specifications	1	Limit switch × 2
		2	Proximity switch × 2
6	Installation orientation	H	Horizontal installation
		V	Vertical installation

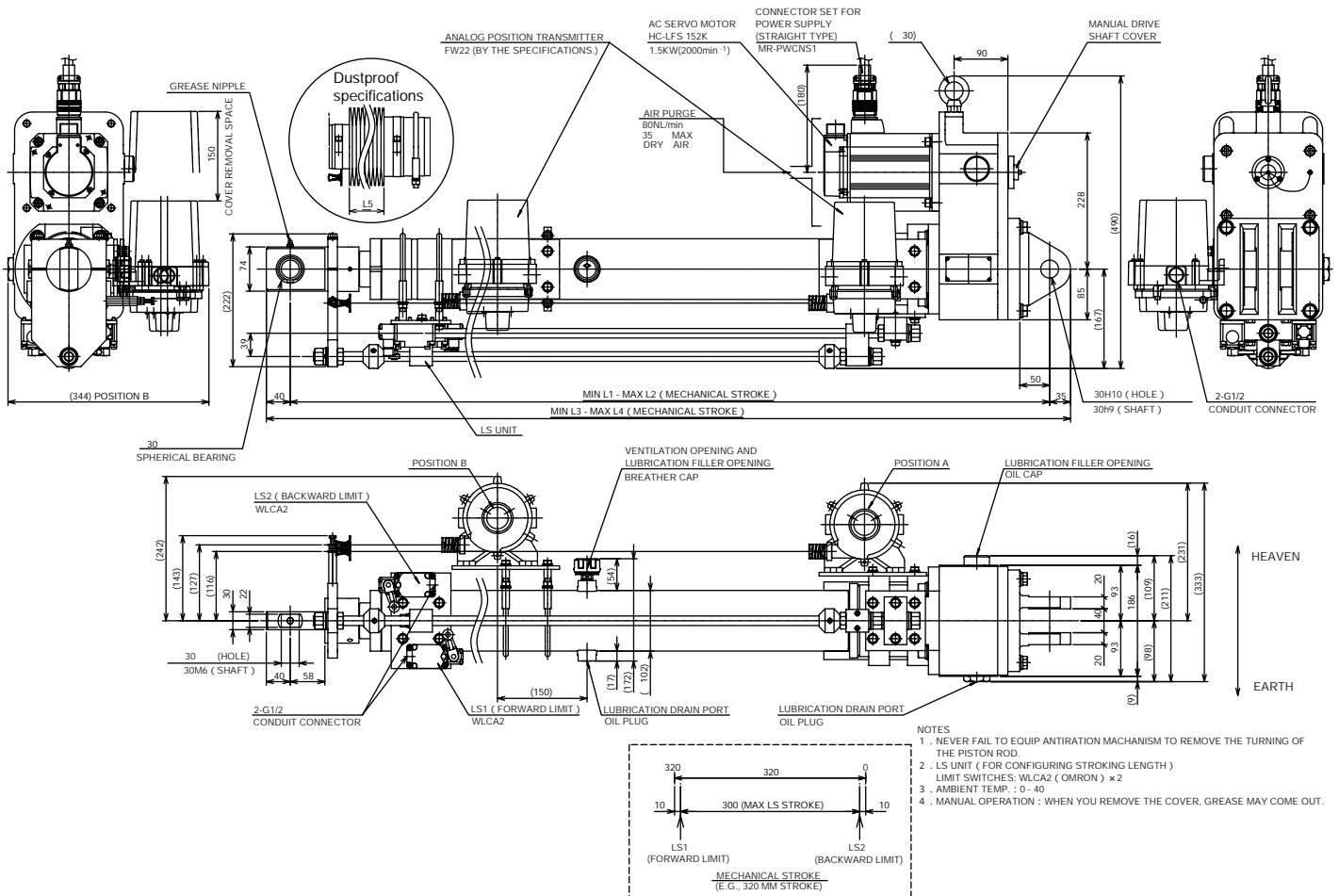
7	Accessory	Model No.			
		HD	TB	BR	MC
	1				
	2				
	3				
	4				
	5				
	6				
	7				
	8				
	9				
	10				
	11				
	12				
	13				
	14				
	15				

HD : Manual handle BR : Brake
TB : Terminal box MC : AC motor cooling mechanism

8 Other (specifications other than those above)

External Dimension Drawings

AC Servo Actuator A2000



MECHANICAL STROKE (mm)		320	370	420	470	520	570	620	670	720	770	820	870	920	970	
MAX LS STROKE (mm)		300	350	400	450	500	550	600	650	700	750	800	850	900	950	
LENGTH (mm)	L1	Standard	970	1020	1070	1120	1170	1220	1270	1320	1370	1420	1470	1520	1570	1620
		Dustproof	1015	1075	1135	1195	1255	1315	1375	1435	1495	1555	1615	1675	1735	1795
	L2	Standard	1290	1390	1490	1590	1690	1790	1890	1990	2090	2190	2290	2390	2490	2590
		Dustproof	1335	1445	1555	1665	1775	1885	1995	2105	2215	2325	2435	2545	2655	2765
	L3	Standard	1045	1095	1145	1195	1245	1295	1345	1395	1445	1495	1545	1595	1645	1695
		Dustproof	1090	1150	1210	1270	1330	1390	1450	1510	1570	1630	1690	1750	1810	1870
	L4	Standard	1365	1465	1565	1665	1765	1865	1965	2065	2165	2265	2365	2465	2565	2665
		Dustproof	1410	1520	1630	1740	1850	1960	2070	2180	2290	2400	2510	2620	2730	2840
	L5	Dustproof	64	74	84	94	104	114	124	134	144	154	164	174	184	194
	MASS (kg)		Standard	102	104	106	108	110	112	114	116	118	120	122	124	126
Dustproof		103	105	107	109	111	113	115	117	119	121	123	125	127	129	
POSITION OF FW22		POSITION A							POSITION B							

We reserve the right to change the specifications in this catalog without prior notice to improve and update our products.



NIRECO CORPORATION

Kyobashi Office
 2F Asako Kyobashi Bldg., 6-13, Kyobashi 1-Chome,
 Chuo-ku, Tokyo, Japan 104-0031
 TEL:+81-3-3562-2201
 FAX:+81-3-3564-4316

Inquiries to: